

Volvo ART 500 Simulator Scenarios



ORYX
SIMULATIONS

Expo Scenarios



Production

In this scenario you will run a full production cycle with the articulated hauler. Start by reversing into position the excavator indicates with its bucket. The excavator will sound its horn once you are in the correct position and will start to load the hauler - remember to activate the load and dump brake. Once loaded, operate according to the indications on the ground to the dump area where you should dump the material within the indicated zone.

Make sure that you operate within the recommended speed while going downhill and that you use the load and dump brake when dumping. Your result will be based on your production rate as well as your ability to operate the machine in a safe and fuel-efficient manner.



Night Production

In this scenario you will run a full production cycle with the articulated hauler. Start by reversing into position the excavator indicates with its bucket. The excavator will sound its horn once you are in the correct position and will start to load the hauler - remember to activate the load and dump brake. Once loaded, operate according to the indications on the ground to the dump area where you should dump the material within the indicated zone.

Make sure that you operate within the recommended speed while going downhill and that you use the load and dump brake when dumping. Your result will be based on your production rate as well as your ability to operate the machine in a safe and fuel-efficient manner.



Production - Muddy Conditions

In this production scenario you will be faced with operating through a very muddy area. To be able to manoeuvre through this patch you will need to use 6x6 drive and the duck-walk technique. First, position the articulated truck where the excavator indicates, once loaded follow the markers on the ground to the dump site. When you reach the muddy area, slow down the hauler and duck-walk through it. Dump the material in the indicated dump area and lower the load body to finish the scenario. You will be evaluated on your production rate as well as on your ability to operate the hauler through the muddy area in a correct manner.



Production – Three Load Cycles

In this scenario you will run three full production cycles with the articulated hauler. Start by reversing into position the excavator indicates with its bucket. The excavator will sound its horn once you are in the correct position and will start to load the hauler - remember to activate the load and dump brake. Once loaded, operate according to the indications on the ground to the dump area where you should dump the material within the indicated zone.

Make sure that you operate within the recommended speed while going downhill and that you use the load and dump brake when dumping. Your result will be based on your production rate as well as your ability to operate the machine in a safe and fuel efficient manner.



Training Exercises



Basic Driving 1

Drive to the indicated parking area and stop the machine according to the correct shut down procedure.



Basic Driving 2

Drive to the indicated parking area and stop the machine according to the correct shut down procedure. The parking area can be found by looking for the blue parking icon on the minimap at the lower left corner of the screen.



Basic Driving 3

Navigate the articulated hauler through a slalom course. Drive to the indicated parking area and stop the machine according to the correct shut down procedure.



Reversing 1

In this exercise the hauler starts fully loaded. The objective is to reverse towards the stockpile and dump the material. After being loaded, a parking area will be shown. Drive there and shut down the machine to finish the scenario.



Reversing 2

In this exercise the hauler starts fully loaded.

The objective is to reverse up the ramp and dump the material over the edge on the stockpile. After being loaded, a parking area will be shown. Drive there and shut down the machine to finish the scenario.



Reversing 3

Reverse the hauler through the course to the load site.

When the hauler is fully loaded the scenario is completed. After being loaded, a parking area will be shown. Drive there and shut down the machine to finish the scenario.



Driving Uphill 1

In this exercise the articulated hauler starts fully loaded. The operator should drive the articulated hauler up a ramp of average 13% inclination to the indicated spot. The main learning points of this exercise are: Gear shift inhibitor usage. Adapting vehicle speed to current conditions. Operating sharp turns with fully loaded vehicle. Medium ground structure class.



Driving Uphill 2

Drive the fully loaded articulated hauler up a ramp of average 32% inclination to the indicated spot. Use gear shift lock-out when necessary. Adapt vehicle speed to road conditions. Take extra care to operate sharp turns with the fully loaded vehicle. Medium ground structure class.



Production – Load from Excavator

Back up to be loaded by an excavator and unload the material in a crusher. Use the dump brake in a correct manner. Drive up and down the stockpile ramp. Perform 10 load cycles to complete the exercise.



Production – Load from Wheel Loader

Reverse to be loaded by a wheel loader and unload the material on a stockpile ramp. Use the dump brake in a correct manner. Drive up and down the stockpile ramp. Perform 10 load cycles to complete the exercise.



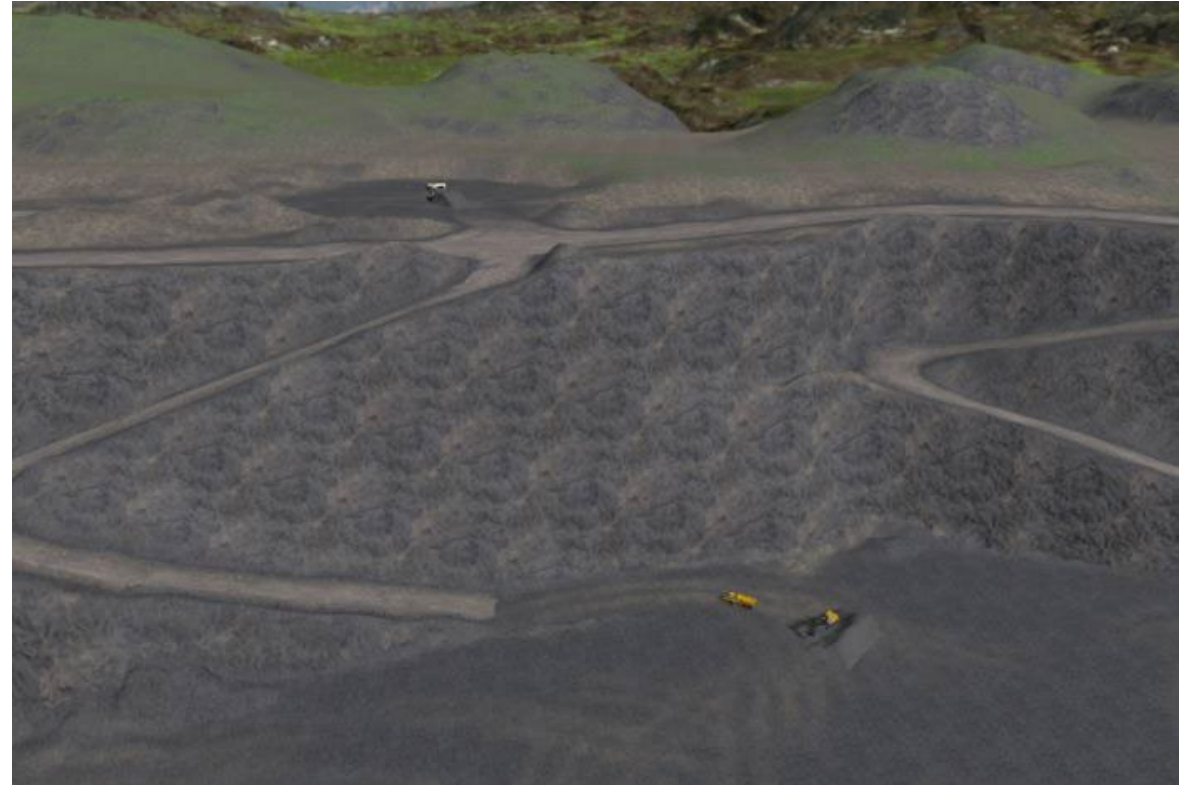
Production – Medium Road Conditions

Production exercise where the hauler is loaded by a wheel loader and unloads on a stockpile (ramp). Perform 5 load cycles and park to complete the exercise. Medium ground structure class.



Production – Uphill/Downhill Hauling

Haul material from the bottom of the quarry. Material is loaded by an excavator and unloaded in a crusher. Perform 2 load cycles and park to complete the exercise. Very good ground structure class.



Production – Uphill/Downhill Hauling (Poor Road Conditions)

Haul material from the bottom of the quarry. Loading is done by an excavator. In this scenario the road conditions are very poor. Perform 3 load cycles and park to complete the exercise. Poor ground structure class.



Volvo ART 500

- Volvo Original Seat & Controls
- 55" Industry Grade LCD Screen
- High Performance Motion Platform
- Co-Pilot 2.0 with Haul Assist
- Over 15 Different Scenarios
Face the Real-World Challenges of Hauler Operations
- Operator Performance System (OPS)
Track Operator Productivity & Efficiency
- Available as Add-On to WLO 500
Change between Wheel Loader and Articulated Hauler in under a minute.



V O L V O